

Human IL-22 Protein; His Tag

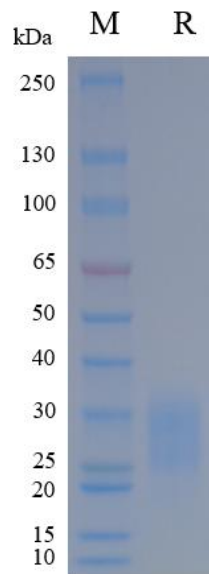
Product Information

Product Name	Human IL-22 Protein; His Tag
Storage temp	Store at $\leq -70^{\circ}\text{C}$, stable for 6 months after receipt. Recommend to aliquot the protein into smaller quantities for optimal storage. Please minimize freeze-thaw cycles.
Catalog# / Size	GM-88080RP-100 / 100 μg GM-88080RP-1000 / 1 mg

Protein Information

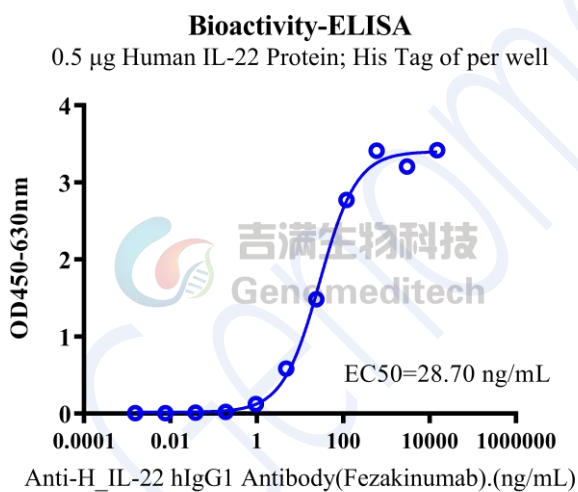
Alternative Names	IL22,IL-TIF,ZCYTO18
Source	Human IL-22 Protein; His Tag (GM-88080RP) is expressed from human 293 cells (HEK-293). It contains AA Ala 34 - Ile 179 (Accession # Q9GZX6-1). This protein carries a His tag at the N-terminus.
Purity	> 90% as determined by SDS-PAGE
Endotoxin	< 1 EU/ μg , determined by LAL gel clotting assay
Predicted Mol Mass	16.8 KDa
Formulation	Supplied as a 0.2 μm filtered solution of PBS, pH7.2-7.4.
Description	<p>IL-22 (Interleukin-22) is a cytokine secreted by immune cells, belonging to the family of cytokines produced by $\gamma\delta\text{T}$ cells, TC17 cells, and helper T cells. It mainly acts on epithelial cells, promoting tissue repair and regeneration, enhancing local immune defenses, and playing an important role in antimicrobial and antiviral responses. IL-22 binds to its receptor to activate intracellular signaling pathways, regulating immune responses and inflammation processes. It is crucial for maintaining the integrity of mucosal barriers and defense mechanisms.</p> <p>In addition to its role in immune regulation, IL-22 is also involved in the development of various diseases, including autoimmune diseases, chronic inflammation, and certain types of cancer. Studies have shown that elevated levels of IL-22 are associated with these diseases, and regulating IL-22 may become a new therapeutic strategy. IL-22's structure features characteristic protein domains that ensure its binding to specific receptors and signal transduction, allowing it to exert multiple protective and regulatory effects within the immune system.</p>

SDS-PAGE



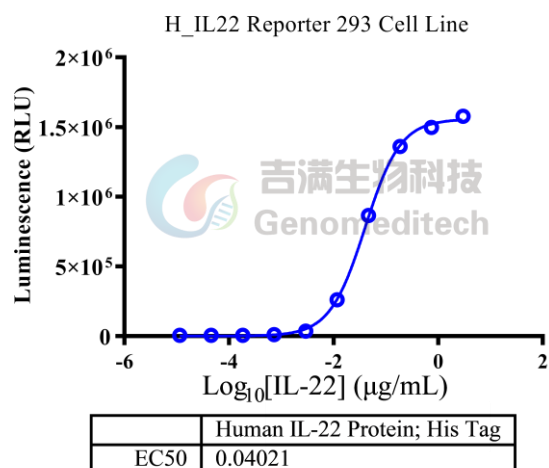
On SDS-PAGE under reducing (R) condition. The gel was stained overnight with Coomassie Blue. The purity of the protein is greater than 90%.

Bioactivity-ELISA



Human IL-22 Protein; His Tag (Catalog # GM-88080RP) was immobilized at 5 µg/ml (100 µL/well). Increasing concentrations of Anti-H_IL-22 hIgG1 Antibody (Fezakinumab) (Catalog # GM-46509AB) were added.

Bioactivity-CELL BASE



Human IL-22 Protein; His Tag (Catalog # GM-88080RP) was added into H_IL22 Reporter 293 Cell Line (Catalog # GM-C19682) and stimulates IL22/IL22R signals.